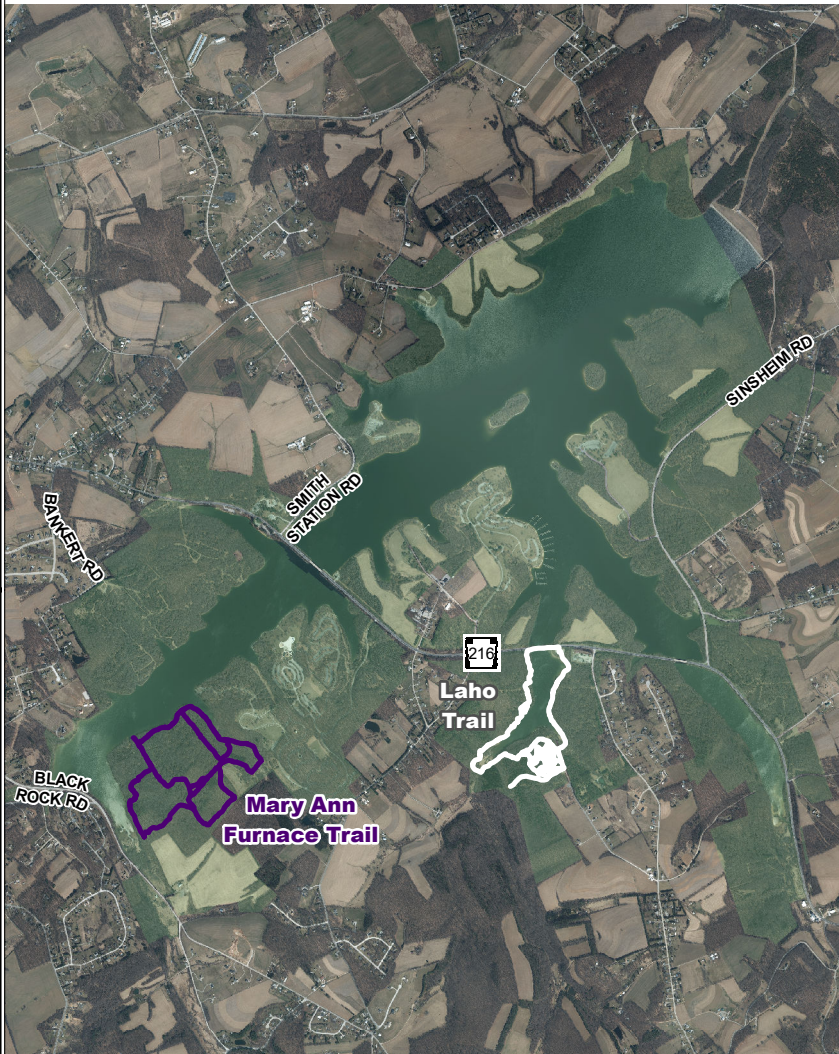


Codorus State Park

2600 Smith Station Road | Hanover, PA



Distance: Mary Ann Furnace Trail - 3.5 Miles
Laho Trail - 1.5 Miles

Difficulty Level: Moderate

Terrain: Natural Terrain

Helpful Info: Biking and horseback riding permitted. Bathroom accessibility at main entrance of park; plenty of parking available. Dog friendly. Collective trails equate to 19 miles.



Date: 9/19/2017